

pasquale corrado

chi

for ereprijs orchestra

Instrumentation:

3 Voices
2 Sopranos and Mezzo Soprano

Flute, Piccolo
Flute
Clarinet in Bb
Soprano Sax, Alto Sax
Soprano Sax, Bariton Sax

Trumpet in Bb
Horn in F
2 Trombons
Tuba

Pianoforte

Electric Guitar

Fretless Bass

Percussion (one player):
Timpano, Gran Cassa, Drums Set, Tubular Bells

Time: 3 minutes

Lyrics

By Pasquale Corrado

all of **ME**
think of **ME**
they can't take that away from **ME**
MISTy
don't get **ARound** much any more
ARound again

The girls from **iPANema**
Giant **Steps**
space **circUs**
nostalgia in times **SQUare**
the days of **WIne** and roses
sophisticated **LADy**
LEzy bird

what is the think **CAIled** love
i remember **cliffORD**
ORnitology
RUsh hours
satin **DOLL**

Explanation:

The score is written without transpositions, except for those instruments which transpose by an octave.

The accidentals are valid only for the notes contained in each bar.

The 3 Voices must be amplified.

Voices:

- The Lyric is in English. All the words must be pronounced in English.
- In the square brackets there is indicated a part of the word that determines the right English phonetic pronunciation of the syllable or the single vowel of the word out of the brackets: for example when you find **A[round]**, you must sing only the "A" in the right English phonetic pronunciation (ə).
- another example: when you find **[I]Pa[nema]**, the complete word is "ipinema", but you must sing only the syllable out of the brackets "Pa" in the right phonetic English pronunciation (pæ).

- N.V.= no vibrato



open



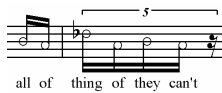
with the hand in front of the mouth (approximately 1 cm far from the mouth)



tongue *trillo* on the F# pronouncing "r"



trillo without sound, with a lot of air, only pronouncing "r"



all of thing of they can't

anxious, sing with a lot of air and pronouncing distinctly each word



I Re I re-mem-ber This thing

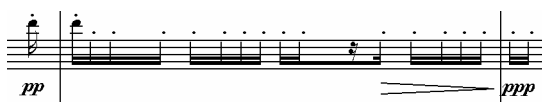
sing these notes freely inside the quarter, very short, sharpened and *forte*

All instruments:



indicated

beat against the first note from very fast to very slow in accordance with the duration



head-less notes represent those that have to be bitten again

Flute:



sound with a lot of air



tongue pizzicato

Piano:

Put three rubbers in the middle of the following chords and leave them for all the time of piece.

the first:



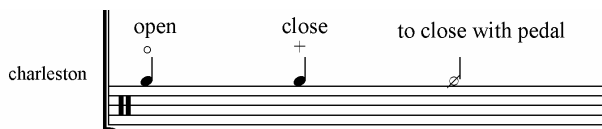
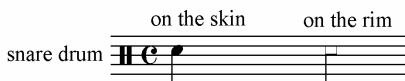
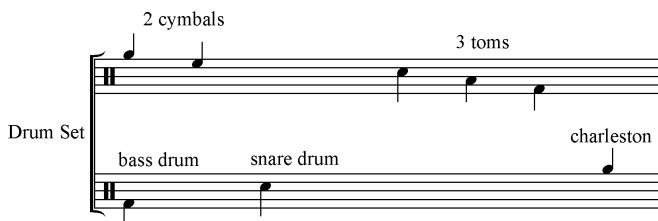
the second:



the third:



Drums Set:



to Ereprijs Orchestra



rarefied

chi

pasquale corrado

Soprano 1
Me _____ all of thing of they can't all of

Soprano 2
Me _____ Me _____

Mezzo-Soprano
they can't take that sing take that a - way from Me _____

Flute 1
< fpp < mp > ppp < mp > p > ppp < mp > o

Flute 2
< fpp < mp > ppp < mp > ppp o < mp > pp > o

Clarinet in B \flat
< fp >

Soprano Sax. 1
ppp

Soprano Sax. 2
ppp

Trumpet in B \flat
straight
< fp

Horn in F
mute
ppp

Trombone 1
straight
ppp

Trombone 2
cup
ppp

Tuba
mute
ppp

Piano
f ppp pp pp ppp ppp pp p ppp

Electric Guitar
poco vibrato with Slide
< fpp < p > ppp ppp pp o

Fretless Bass
Chorus+Flanger+Reverb+Delay
ppp p > ppp mp ppp

Cymbal with bow
Tabular Bells soft stick
< f mf mp mfp

Timpano
tune on C
f ppp

Annotations:
- N.V. (Non Vibrato)
- anxious with a lot of air
- straight
- +Distorsore no vibrato

4

S 1 *mp* all of can't take that a - way from Me *mf* *p* *mf* *> pp* *mf* *p* *pp* *p* *no sound*

S 2 *mp* thing of can't take that a - way from Me *mf* *pp* *mf* *pp* *mp* don't get

Mezzo *mp* *pp* *mp* *p* don't get much don't get *mp* *f*

Fl. 1 *pp* *pp* *p* *pp* *pp*

Fl. 2 *pp* *p* *pp*

B♭ Cl. *p* *mp* *pp* *mf* *pp* *mfpp* *mf*

S. Sx. 1 *ppp*

S. Sx. 2 *ppp*

B♭ Tpt. *p* *mf* *pp*

Hn. *ppp* *p* *ppp* *> o*

Tbn. 1 *ppp* *p* *ppp*

Tbn. 2 *ppp* *p* *ppp* *> o*

Tuba *ppp* *p* *ppp*

Pno. *p* *pp* *ppp* *p*

E.Gtr. *p* *ppp* *pp* *electric noises* *Glissando* *Glissando* *Glissando* *Gliss.*

E.B. *pp* *pp* *pp*

Tubular Bells soft stick *mf* *p* *mf* *p* *Gran Cassa* *pp* *ppp*

S 1: *p mp mf p f*
 much a - ny much a - ny more a - ny more much a - ny more much a - ny

S 2: *p mp mf p f*
 much a - ny don't get much a - ny don't get much a - ny more much a - ny a - ny much much

Mezzo: *mp mf p f*
 - ny more don't much a - ny a - ny much a - ny more much a - ny much a - ny a - ny

Fl. 1: *mp pp* Piccolo

Fl. 2: *mp p mp*

B♭ Cl.: *mp* slap *pp*

S. Sax. 1: Alto Sax

S. Sax. 2: Bariton Sax

B♭ Tpt.: *ppp* plunger *ff*

Hn.: *ppp* no mute *ff*

Tbn. 1: *ppp* plunger *ff*

Tbn. 2: *ppp* plunger *ff*

Tuba: *ppp* no mute *ff*

Pno.: *f ppp*

E. Gtr.: *f* poco vibrato *f*

E.B.: *p ppp pp mf f pp*

Drum set: *f ppp* with fingers

This page of a musical score covers measures 17 through 20. It features vocal soloists (S 1, S 2, Mezzo) and a full symphony orchestra. The vocal parts have lyrics: "The _____" and "The". The orchestral parts include Flutes 1 and 2, Clarinet in B-flat, Saxophones 1 and 2, Trumpets 1 and 2, Trombones 1 and 2, Tuba, Piano, Electric Guitar, and Drums Set. The score is heavily annotated with dynamic markings such as *ppp*, *p*, *mp*, *f*, *sf*, and *mf*, along with performance instructions like accents, slurs, and breath marks. The piano part includes a *sfppp* marking and a *tr* (trill) symbol. The drums set part shows complex rhythmic patterns with dynamic markings like *f* and *ppp*.

Vocal Parts:
S 1: gir - - - ls from I[panema] the girls from [I]Pa[nema]-pa pa pa pa pa
S 2: gir - ls the gir - - - ls from form [I]Pa[nema]
Mezzo: N.V. The girls from I[panema] from

Instrumental Parts:
Fl. 1: ppp, p, ppp, p
Fl. 2: p, ppp, p, pp, P, ppp
B♭ Cl.: p, ppp, p, f, p
S. Sax. 1: p, ppp
S. Sax. 2: sf/mf
B♭ Tpt.: sf/mf, ppp, f, pp
Hn.: sf/mf
Tbn. 1: sf/mf
Tbn. 2: sf/mf
Tuba: sf/mf
Pno.: p, ppp, f
E. Gtr.: pp, mp, pp, mp, pp, mp, pp, mp, pp, mf
E. B.: mf, p, pp
Drums Set: f, ppp, p, f, ppp, Timpano

f *p* *f* *p* *p* *f* *mf* *f*
poco vibrato

S 1
pa pa pa pa-pa pa pa pa pa pa pa pa pa pa pa . pa

S 2
pa pa-pa pa pa pa pa pa pa pa pa pa - pa pa pa pa pa pa pa pa pa pa pa pa pa pa pa pa pa

Mezzo

Fl. 1
pp *mp* *pp* *mp* *pp*

Fl. 2
p *pp* *mp* *pp* *mp* *pp* *mp*

B♭ Cl.
mf *f* *p* *f* *p* *p* *f* *p*

S. Sax. 1
pp *fff* 5

S. Sax. 2
pp *fff* 5

B♭ Tpt.
plunger
mute
p *f* *p* *f* *p* *f*
no mute
fff 5

Hn.
pp *fff* 5

Tbn. 1
cup
pp *fff* 5

Tbn. 2
cup
pp *fff* 5

Tuba
mute
pp *fff* 5

Pno.
15ma.
pp *mp* *pp* *mp* *pp*

E. Gtr.
p *f* *p* *f*
+ Distorsore no Wa-Wa
fff 5

E. B.
pp *mp* *pp* *mp* *pp*
no Flanger
fff 5

Drum set:
timpani's stick
p *ppp*
(ride)
wood sticks
fff 5

28

S 1 *p* *p* *mp* *p* *mf*
 pa — pa pa pa pa pa — pa pa pa pa pa pa pa — pa pa pa pa pa pa pa

S 2 *p* *mp* *pp mp > pp mp* *pp* *mp*
 pa — pa — pa pa pa pa pa pa ne — — — — ma the — — — — days Pa —

Mezzo *mp* *pp mp* *pp*
 No — — — — stal — — — — gia

Fl. 1 *ppp* *mp* *pp*
5

Fl. 2 *ppp* *mp*

B♭ Cl. *mf*

S. Sx. 1 *pp*

S. Sx. 2

B♭ Tpt. *plunger* *sf/p*

Hn. *sf/p* *plunger*

Tbn. 1 *pp* *plunger*

Tbn. 2 *sf/p*

Tuba

Pno. *p* *mf* *p* *mf* *p* *mf* *p* *mf*
 * * * * *

E. Gtr. *pp < mp* *pp < mppp* *pp < mp* *pp < mp* *pp < mp* *pp < mp* *pp <*
 + Wa-wa no Distorsore *gtr*

E.B. *slap* *3*

Drums Set *mp*

Vocal Soloists:
S 1: *mf* *f* *mf* *f* *mf* *f* *mf* *f*
S 2: *mf* *f* *f mf* *f mf* *f f* *f mp*
Mezzo: *mf* *f* *mf* *f* *mf* *f* *f mf* *f mf* *f mf*

Flutes:
Fl. 1: *mp* *pp* (Flute in C)
Fl. 2: (rest)

Woodwinds:
B♭ Cl.: *fp* *fp* *fp* *fp fp*
S. Sax. 1: *f*
S. Sax. 2: (rest)

Brass:
B♭ Tpt.: *p* *fp* *fp* *p* *f* *p* *f*
Hn.: (rest)
Tbn. 1: (rest)
Tbn. 2: (rest)
Tuba: (rest)

Piano:
Pno.: *mf* *f* *mf* *f* *f* *mp* *mf* *f* *f* *mp* *f*
chords, right hand, strike with a middle stick
keyboard (left hand)

Electric Instruments:
E. Gtr.: *p* *f* *p* *f* *p* *f* *p* *f*
E. B.: *mp* *pp* *mp* *pp*

Vocal Parts:
S 1: *f* wi wi wi wi wi wi wi wi wi wi. *f* N.V. whi - - - - - te. *f* whi - - - - - te. *p* 1/2 sound, 1/2 only consonant.
S 2: *mf* wi wi. *ff* wi wi. *f* N.V. whi - - - - - te. *p* whi - - - - -
Mezzo: *mf* wi wi. *mf* wi wi. *f* N.V. whi - - - - - te. *p* whi - - - - -

Instrumental Parts:
Fl. 1: *f* (5ths)
Fl. 2: *f* (5ths), *ppp*
B♭ Cl.: *fp* (5ths), *f* (5ths)
S. Sax. 1: *fff* (5ths)
S. Sax. 2: *fff* (5ths)
B♭ Tpt.: *fff* (5ths), *p < f* (plunger)
Hn.: *fff* (5ths)
Tbn. 1: *fff* (5ths)
Tbn. 2: *fff* (5ths)
Tuba: *fff* (5ths)
Pno.: *fff* (5ths), *pp* (pedal)
E. Gtr.: *ff* (no Distorsore, no Wa-Wa), *pp* (slap), *f*, *pp*
E.B.: *fff* (slap)
Drum set: *fff* (wood sticks), *pp*

Vocal Parts:
S 1: *f* wi[ne] and ro - ses ro - ses So - phi -
S 2: *p* te - and ro - ses So - phi - sti - ca - ted So -
Mezzo: *p* te wi[ne] wi wi wi wi[ne] wi

Instrumental Parts:
Fl. 1: *ppp* *pp* *mp* *pp* *mp* *pp*
Fl. 2: *pp* *mf* *pp* *pp* *mp* *pp*
B♭ Cl.: *ppp* *mp*
S. Sax. 1: *pp* *mp* *pp* *mp* *pp* *mp* *sfz* *sfz*
S. Sax. 2: *sfz* *sfz* *sfz*
B♭ Tpt.: *p < f* *p < f* *p* *f* *p < f*
Hn.: *sfz* *sfz* *sfz*
Tbn. 1: *plunger* *sfz* *pp*
Tbn. 2: *cup* *sfz* *sfz* *sfz*
Tuba: *sfz* *sfz* *sfz*
Pno.: *f* *pp* *f* *pp* *f* *pp* *f*
E.Gtr.: *f* *pp* *f* *pp* *f* *pp* *f*
E.B.:
Drums Set: *< f* *pp* *f* *pp* *f* *pp* *f*

45

S 1
sti - ca - ted Le(dy) le le le le le le le le le le

S 2
phi - sti - ca - ted Le(dy) le le le le le le le le le le le le le le le le

Mezzo
wi wi wi

Fl. 1
f *s* pp f

Fl. 2
f pp

B♭ Cl.
pp f pp

S. Sax. 1
f pp

S. Sax. 2
f pp

B♭ Tpt.
f pp pp mf

Hn.
f pp

Tbn. 1
f pp

Tbn. 2
f pp

Tuba
f pp

Pno.
f f

E. Gtr.
pp f pp pp mp

E. B.
f pp

Timpano
f pp

Drums Set
pp

48

S 1
le(dy) le le le le le le le le le _____ le _____

S 2
le le le le le le le _____ le _____

Mezzo

Fl. 1
p *f* *p* *f*

Fl. 2
f *p* *f*

B♭ Cl.
f *p* *f*

S. Sx. 1
p

S. Sx. 2
p

B♭ Tpt.
pp *f* *pp* *f*

Hn.
p

Tbn. 1
p

Tbn. 2
p

Tuba
p

Pno.
f *f*

E. Gtr.
p

E.B.
p

Drums Set
pp

$\text{♩} = 112$ restless

Vocalists (S. 1, S. 2): Lyrics: "le le". Dynamics: *f*.
Mezzo: Resting.
Flutes (Fl. 1, Fl. 2): Dynamics: *f*, *fff*.
Clarinet (B♭ Cl.): Dynamics: *f*, *fff*.
Saxophones (S. Sax. 1, S. Sax. 2): Dynamics: *fff*.
Trumpets (B♭ Tpt.): Dynamics: *fff*. Instruction: no mute.
Horn (Hn.): Dynamics: *fff*. Instruction: no mute.
Trumpets (Tbn. 1, Tbn. 2): Dynamics: *fff*. Instruction: no mute.
Tuba: Dynamics: *fff*. Instruction: no mute.
Piano (Pno.): Dynamics: *p*.
Electric Guitar (E. Gtr.): Dynamics: *fff*. Instructions: + Distorsore, no Wa-Wa, no Flanger.
Electric Bass (E.B.): Dynamics: *fff*, *p*. Instruction: only chorus.
Drums Set: Dynamics: *fff*, *p*.

56

very short and sharpened

very short and sharpened

very short and sharpened

S 1

S 2

Mezzo

Fl. 1

Fl. 2

B♭ Cl.

S. Sax. 1

S. Sax. 2

B♭ Tpt.

Hn.

Tbn. 1

Tbn. 2

Tuba

Pno.

E. Gtr.

E. B.

Drums Set

what is is this what thing what is

What is what is this is what is

I Re I

harmon in

straight

cup

pizzicato on the chords (right hand)

keyboard (left hand)

Chorus+Reverber+Distorsore

f *p* *mf* *fp* *mp* *pp*

$\bullet = 112$

$\bullet = 56$

S 1 re-mem - ber This thing Ca[lled] Ca[lled] O - r - ni - to - lo - gy O - r O -

S 2 what is this thing Ca[lled] Ca[lled] Ca[lled] O - r - ni - to - lo - gy O - r -

Mezzo is this is thing Ca[lled] Ca[lled] O - - - r O - r -

Fl. 1 *mp* *p* *mf* *f* only air

Fl. 2 *p* *mf* *f* only air

B♭ Cl. *fp* *f*

S. Sx. 1

S. Sx. 2

B♭ Tpt. *f > pp* *f > p*

Hn. *fp* *f > p*

Tbn. 1 *mpp* *f > p*

Tbn. 2 *mpp* *f > p*

Tuba *f* *p*

Pno. *ff* *p*

E. Gtr. *p* no Distorsore, only Chorus

E. B. *p*

Drums Set *p* *p* *ff*

Timpano Drum set wood sticks

♩ = 144

68

S 1 *mf* Ru[sh] — Ru[sh] — *f* Do[II] *ff* Do[II] — Do[II] — Do[II]

S 2 ho - urs Sa - tin Sa Ru[sh] — Do[II] *ff* Do[II] — Do[II] — Do[II]

Mezzo ho - urs Sa - tin Sa - tin Sa - Sa - tin Sa - tin Do[II] *ff* Do[II] — Do[II] — Do[II]

Fl. 1 *ff*

Fl. 2 *ff*

B♭ Cl. *ff*

S. Sx. 1 *ff* *p* *ff* *p* *ff*

S. Sx. 2 *ff* *p* *ff* *p* *ff*

B♭ Tpt. *ff* *p* *ff* *p* *ff*

Hn. *ff* *p* *ff* *p* *ff*

Tbn. 1 *ff* *p* *ff* *p* *ff*

Tbn. 2 *ff* *p* *ff* *p* *ff*

Tuba *ff*

Pno. *ff*

E. Gtr. Chorus+Overdrive+Distorsor+Delay *ff* Chorus+Delay+Overdrive+ *ff*

E.B. *ff*

Timpano ordinary sticks

71

S 1
Do[III]

S 2
Do[III]

Mezzo
Do[III]

Fl. 1

Fl. 2

B♭ Cl.

S. Sax. 1

S. Sax. 2

B♭ Tpt.

Hn.

Tbn. 1

Tbn. 2

Tuba

Pno.

E. Gtr.

E. B.

71

Timpano

74

S 1
Do[III] Do[III]

S 2
Do[III] Do[III]

Mezzo
Do[III] Do[III]

Fl. 1
5

Fl. 2
5

B \flat Cl.
5

S. Sax. 1
p *ff* *p* *ff*

S. Sax. 2
p *ff* *p* *ff*

B \flat Tpt.
p *ff* *p* *ff*

Hn.
p *ff* *p* *ff*

Tbn. 1
p *ff* *p* *ff*

Tbn. 2
p *ff* *p* *ff*

Tuba
p *ff*

Pno.

E. Gtr.

E. B.

Timpano
p

crawl the stick on the cymbal